



143-A LeFleurs Square
Jackson, MS 39211
Office: 601-355-9526
Fax: 601-352-3945

The Byram-Clinton/Norrell Corridor has been the County's number one transportation priority for the past two decades. Strong and consistent Federal support has enabled the County to get Segment 2 of the Corridor to the point of a construction start of June 2017. The Corridor will connect the cities of Byram, Raymond, Clinton, and Jackson, while providing for the safe, orderly and efficient transportation of people and goods.

Segment 2 of the Corridor, approximately 3.53 miles of roadway beginning at the intersection of Davis Road and Siwell Road extending northerly and westerly to Parks Road.

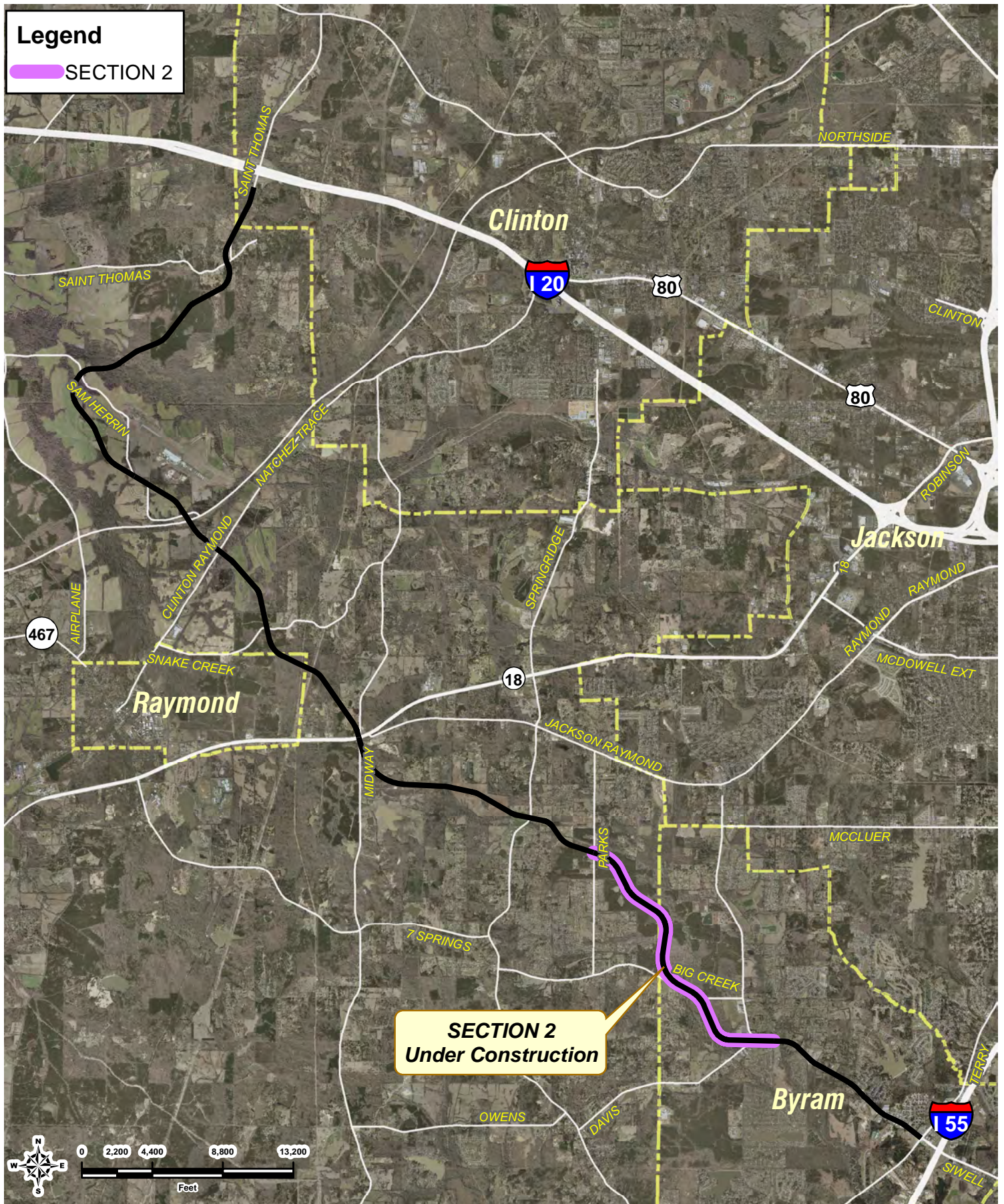
Hinds County Board of Supervisors awarded the construction contract through its bidding process to Eutaw Construction Company, Inc. on April 25, 2017. The Notice to Proceed was issued for work to begin on June 19, 2017, with an anticipated construction completion date of August 2, 2019. The project is in its initial stage with the contractor cutting trees in a wooded area along this segment of the project North of Big Creek Road. However, due to the enormous amount of rain brought on by Tropical Storm Cindy construction work has been minimal during its first week.

Total Construction Funding: \$ 19.4M

Contractors tentative next activity: Clearing and Grubbing June 26, 2017 to December 6, 2017

Legend

SECTION 2



BYRAM - CLINTON NORRELL CORRIDOR
HINDS COUNTY
BOARD OF SUPERVISORS

